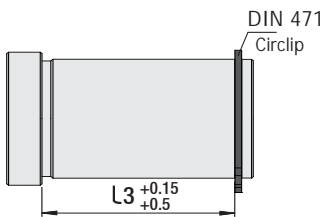
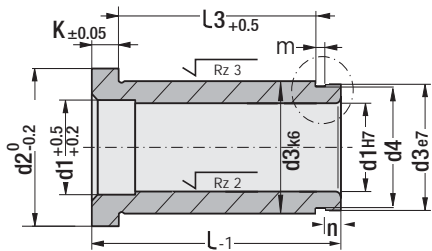


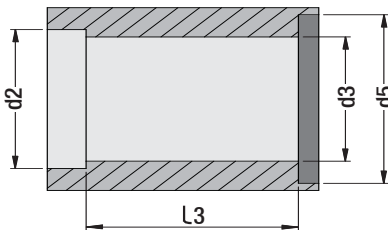


**Guide Bush - Headed** (with circlip slotted) Code: **G49**

For general usage in injection mould guide systems - it prevents the bush protrude in free rotating plates (H6 centre fixing).



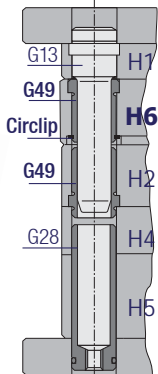
**Mounting Dimensions**



**Compatible Pillars**



**Mounting Example**



**Guide Bush - Headed**

Code: **G49**

d1	L	d3	d2	k	L3	m	n	d4	d5	Circlip
<b>12</b>	27	18	25	6	18	1	2	17	26.7	DIN 471 Ø 18
	36				27					
	46				37					
	56				47					
<b>14</b>	27	20	25	6	18	1	2	19	29.1	DIN 471 Ø 20
	36				27					
	46				37					
	56				47					
	66				57					
	76				67					
	86				77					
	96				87					
<b>16</b>	27	22	27	6	18	1	2	21	31.7	DIN 471 Ø 22
	36				27					
	46				37					
	56				47					
	66				57					
<b>20</b>	27	26	31	6	18	1	2	25	36.3	DIN 471 Ø 26
	36				27					
	46				37					
	56				47					
	66				57					
	76				67					
	86				77					
	96				87					
	116				107					
	136				127					
<b>24</b>	27	30	35	6	17	2	2	29	41.4	DIN 471 Ø 30
	36				26					
	46				36					
	56				46					
	66				56					
	76				66					
	86				76					
	96				86					
	116				106					
	156				146					

d1	L	d3	d2	k	L3	m	n	d4	d5	Circlip
<b>30</b>	27	42	47	6	15	2	4	40	56	DIN 471 Ø 42
	36				24					
	46				34					
	56				44					
	66				54					
	76				64					
	86				74					
	96				84					
<b>40</b>	27	54	60	10	19	2	5	51	69.3	DIN 471 Ø 54
	36				29					
	46				39					
	56				49					
	66				59					
	76				69					
	86				79					
	96				89					
<b>50</b>	27	66	72	10	19	3	5	62	82.7	DIN 471 Ø 65
	36				29					
	46				39					
	56				49					
	66				59					
	76				69					
	86				79					
	96				89					
<b>60</b>	27	80	86	20	19	3	5	77	99.1	DIN 471 Ø 80
	36				29					
	46				39					
	56				49					
	66				59					
	76				69					
	86				79					
	96				89					



Order: **G49**. d1 x l

Material: 1.7131 (16MnCr5)  
Hardness: 58 - 62 HRC